



The Power of Music to Change Lives: A National Plan for Music Education (England)

A Summary for Music Hubs

The Power of Music to Change Lives: A National Plan for Music Education (The Plan) builds on the original 2011 plan ‘*responding to the change of the past 11 years and recognising that more needs to be done to support teachers, leaders, schools, trusts and Hubs to deliver the best for children and young people*’.

There is an updated vision: ‘**To enable all children and young people to learn to sing, play an instrument and create music together, and have the opportunity to progress their musical interests, including professionally**’, including a focus on early years settings, and a strong narrative about progression through school into a life-long appreciation and/or professional career in music.

There is clear recognition of the importance of schools in providing music opportunities in and out of the classroom, with emphasis on schools providing children with time and space to learn to play musical instruments during the school day. The Plan highlights the expectation that schools should deliver a high-quality curriculum for at least one hour a week and regularly references the DfE’s (non-statutory) [Model Music Curriculum](#). The [Music Teachers Association](#) have prepared a summary of the requirements within The Plan for schools to consider which can be found [here](#) and two versions of a self-evaluation tool for schools ([primary](#) and [secondary](#)).

Music Hubs remain a key part of the National Plan for Music Education with a clear statement that every Hub will build ‘**a sustainable local eco-system for music education, through partnerships, with progression, access and inclusion, central to their work**’

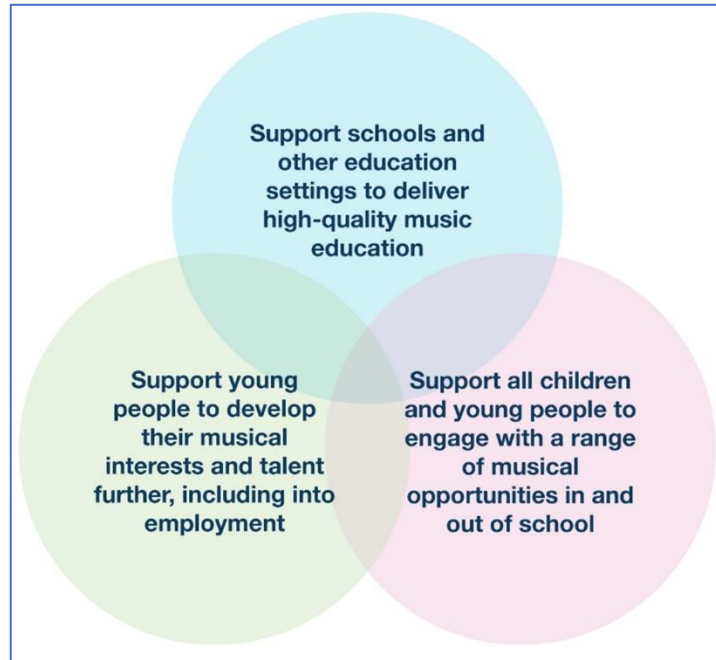
The refreshed Plan does not have a set of Core and Extension Roles for Music Hubs to deliver, but rather highlights the importance of providing access to ‘a broad musical culture’ through ‘*expertise, instruments, technology and facilities they need to learn, create and share their music.*’ There are however three ‘goals’:

1. All children and young people receive a high-quality music education in the early years and in schools (Chapter 1 Pages 15-46 which focuses on the role of schools, with some mention of early years provision)
2. All music educators to work in partnership with children and young people’s needs and interests at their heart (which focuses on the role of Hub Partnerships – Chapter 2 Pages 47-60)
3. All children and young people with musical interests and talents to have the opportunity to progress their interests and potential, including professionally (which focusses on progression routes including the Music and Dance Scheme, National Youth Music Organisations, further and higher education and the role of the industry – Chapter 3 Pages 61-77)

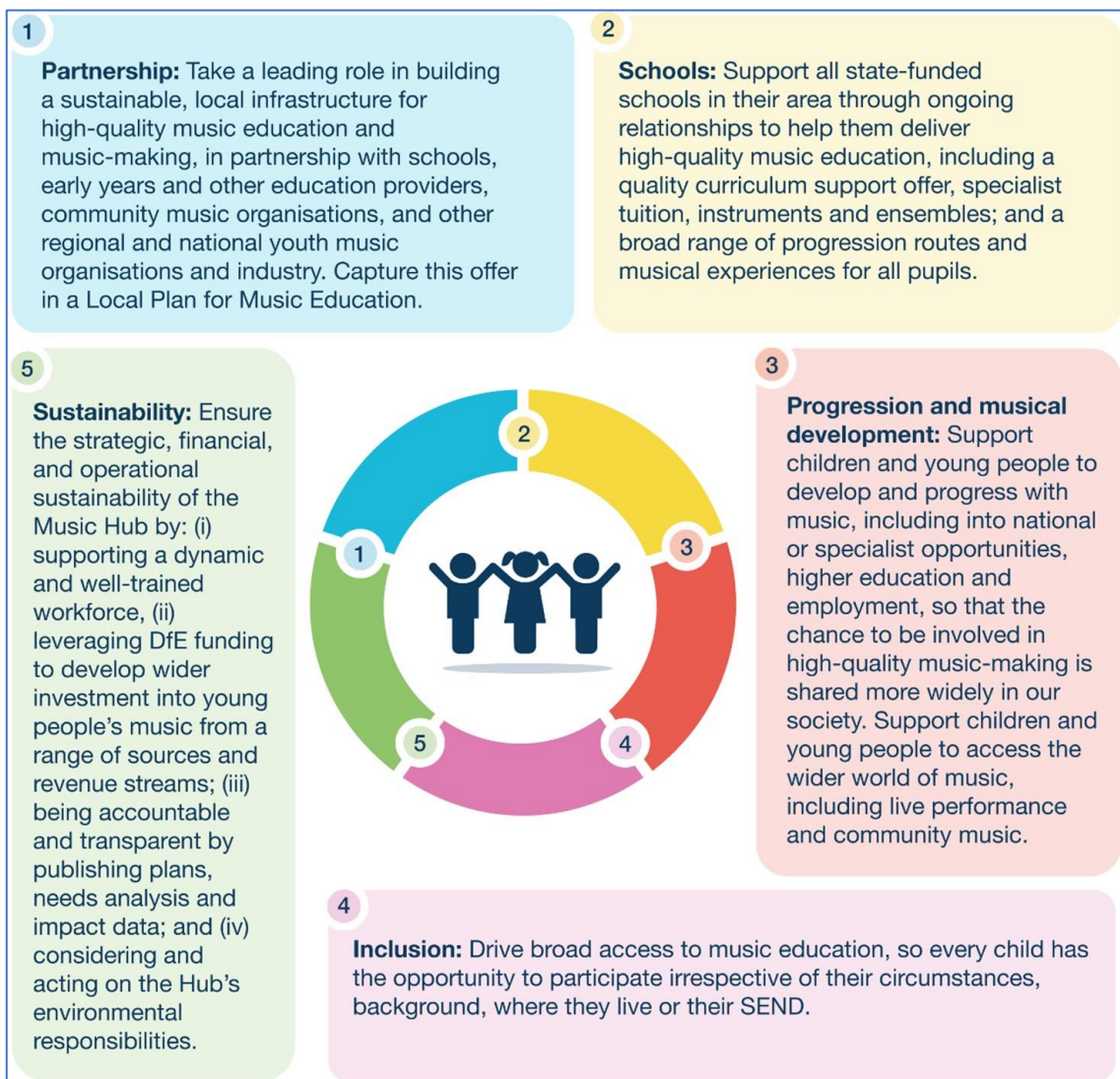
The Plan continues to highlight the role of Music Hubs, with a clear statement that every hub will ‘**build a sustainable local eco-system for music education, through partnerships, with progression, access and inclusion central to their work**’.

Key points within The Plan for Music Hubs

In due course Music Hubs will be expected to focus on the following three aims:



Music Hub Lead Organisations, which receive and are accountable for government's funding will have responsibility for five strategic functions, to be delivered through partnership:



More details on each of the five strategic functions can be found here:

- Local Plan for Music Education (pg50).
- Schools (Pg51)
- Progression and musical development (Pg57)
- Inclusion (Pg42 & Pg55)
- Sustainability – Hub’s environmental responsibilities (pg58)

Further points:

- **Early Years** is mentioned within the plan recognising ‘*A strong foundation of music in the early years is vital for all children*’. Music Hubs are encouraged to support early years settings (Pg17)
- Music Hubs should support schools to write ‘*a **Music Development Plan** that captures the curricular and co-curricular offer and set outs how it will be funded.*’ Multi-Academy Trusts will be expected to develop trust-wise Music Developments Plan. (Pg21 & pg51)
- Music Hubs are being asked to identify (by Spring 2024) ‘**Lead Schools with high-quality music provision to work with the Hub**’ on design and delivery of CPD & Peer to peer support. (Pg16 & Pg52)
- Primary schools ‘*should offer group instrumental teaching programmes in class time – either **WCET or large/small-group tuition***’ and where schools need external support to do so the Plan states ‘*we would expect schools to pay Music Hubs for such provision and also expect Hubs to set charges that demonstrate value*’. (pg29)
- ‘*Hubs should develop an offer of **training, networking and music learning opportunities** for teachers in their area*’ as well as instrumental teachers. (pg55)
- The DfE will establish **National Music Hub Centres of excellence for Inclusion, CPD, Music Technology and Pathways to Industry** by August 2024 – four Hubs that will be given additional funding to support all Music Hubs across England in these areas. (Pg25 & Pg59)
- From September 2023 the DfE will ‘*match fund*’ a four-year pilot ‘**Music Progression Fund** to support disadvantaged pupils with significant musical potential’. (Pg21 & Pg57)
- All hubs should develop and publish an **inclusion strategy** by 2022 and appoint an **inclusion lead** by 2024. (Pg55)
- Hub partnerships should look to facilitate stronger connections between music education and progression into music careers. As part of this Hubs will be asked to appoint a ‘**local voluntary Music Ambassador, ideally a professional musician**’ (pg56)

The Plan highlights the importance of progression routes for all children and young people regardless of whether they hope to pursue a career in music or the creative industries, or if music is a leisure time activity including as part of ‘*audiences of the future*’.

There is a summary document published by government for parents/carers and children and young people and a poster for schools, arts centres, libraries etc to display to highlight The Plan – see ‘further reading’ below for links to these and other useful documents/website pages.

Next steps:

The Government have given some indication of their plan to open up the Music Hub programme to competition ‘*as was the case..... in 2011..... inviting applications for the role of Music Hub Lead Organisations which receive Government funding to coordinate Music Hub partnerships going forward*’. (Pg74). The Government expects that ‘*through this competitive process, we will see a reduced number of hub Lead Organisations establishing partnerships across wider geographical areas.*’ (Pg66). The aim is for Hub Lead Organisations to become more strategic, building a wider range of strong partnerships, to ensure that there is ‘*high quality support in every local area*’ and that there are ‘*no local ‘cold spots’ where access to provision is limited*’.

To support the monitoring of the Plan a **Music Education Board** will be established to ‘*support and challenge Government*’. This Board will develop an impact framework for the Plan ‘*setting out how to monitor and measure its success*’ (pg75).

Timeline notes:

- Autumn 2022 – ACE/DfE will publish further details of the competition process
- Autumn 2022 more details will be made available around the Progression Fund 4-year pilots
- ‘Towards the end of 2022’ – further detail on the monitoring arrangements will be published
- By December 2022 – Hubs to have published an inclusion strategy
- By September 2023 Schools to have develop a School Music Development Plan
- By September 2023 the Progression Fund pilots will have been identified to run for four years
- Spring 2024 – Hubs to have identified Lead Schools
- By September 2024 – National Music Hub Centres of Excellence to have been appointed
- By September 2024 – Hubs to have appointed a Music Ambassador
- 2024 – Hubs to have appointed an inclusion lead

Further Reading:

- [The Plan](#)
- DfE [Additional Case Studies](#)
- DfE [The Power of Music to Change Lives: Resources](#)
- [The DfE Press release](#)
- [Summary for schools](#)
- [Music Education Poster for Primary Schools](#)
- [Music Education Poster for Secondary Schools](#)
- [FAQs prepared by Arts Council England](#)
- [A blog by Darren Henley, CEO, Arts Council England](#)
- DfE Summary for parents/carers & Children and young people (coming soon)

NOTE - This summary document has been prepared by Music Mark to support the publication of the National Plan for Music Education. It is not a government publication.